



IT Review



№ 2

март - апрель

2018 г.

Кафедра английского языка обеспечивает преподавание дисциплины «Английский язык» на факультете математики и технологий программирования. Каждый выпуск студенческой газеты подготавливается преподавателями, студентами и магистрантами факультета и представляет обзор событий и новостей в сфере информационных технологий

IT in Belarus

Belarus's IT industry is conspicuous among other sectors of economy for its steadily growing revenues, exports, workforce and other indicators.

The IT industry's weight is growing as a component of all macroeconomic indicators, and this demonstrates the effectiveness of current incentives (strong tax benefits) as well as the industry's competitiveness on external markets and growth potential.

The IT product and services segment has been growing at a fast pace since 2006, when the Hi-Tech Park was established. The Hi-Tech Park provides a special regime for IT companies. Resident companies enjoy important government support: they are exempted from most taxes, including value-added tax and income tax. Thanks to the HTP, Belarus managed to build a mature export-oriented software development industry and became a significant player on the IT services market in Europe over just 10 years.



Today, Belarus Hi-Tech Park is one of the largest IT clusters in Eastern Europe, with over 30,000 software engineers employed there. This favorable environment, as well as the availability of qualified IT specialists, fosters the development of IT business in Belarus.



Hi-Tech Park residents are classified as follows:

- Companies specializing in providing IT services;
- Companies specializing in developing and supporting proprietary products (including startups);
- Captive centers or representative offices of foreign IT companies.

IT products and services make up the fastest growing and most promising segment of the Information and Communication Technology (ICT) sector in Belarus. ICT companies' activities in Belarus span across various sectors of the economy and include hardware production, repair and maintenance; software development; development of automated information systems; telecommunication services; training in ICT; consulting and other ICT-related services.

The ICT workforce is mostly employed in IT products and services and telecommunications. Major IT companies, such as EPAM Systems, Wargaming, IBA Group, and Itransition, make up the core of the IT products and services segment. The telecommunications segment is clearly dominated by Beltelecom, the largest government-owned telecommunications operator; other players include mobile phone operators Velcom (Telekom Austria Group), Life (Turkcell Group) and MTS (Mobile TeleSystems Group). Apart from them, some small Internet providers operate in the segment.



The hardware production, installation and maintenance segment



comprises large public-sector companies that engage in the production of TV and radio equipment, semiconductors and integrated circuits, such as Integral as well as an array of small businesses that produce

various technology goods and provide maintenance services.

An important aspect of technical education is student access to new technologies and systems. Such access improves the quality of education and thus helps both

universities and companies by reducing the cost of additional training and allowing talented students to be identified and recruited even before their graduation. For



this reason, the law allows companies in the IT industry to enter into cooperation agreements with educational institutions.

The form of cooperation that is most widespread and affordable for companies makes use of employees of technology companies to teach specific subjects, special courses or labs (practical training involving the use of specific technologies).



Belarusian educational institutions work not only with domestic IT companies, but also with international technology vendors. Universities work with IBM as part of the

the IBM Academic Initiative Program, and a memorandum of understanding has been

signed (IBM Eastern Europe/Asia). The IBM

Technology Academic Competence Center was established on 21 April 2011. Students who

complete training courses at the center receive IBM certificates as part of the IBM Academic Qualification Program.



Training centers of major IT companies - an important new element of the IT education system - train new specialists for the IT industry and provide retraining and advanced training for those already employed in the industry.

IBA's IT and Business Administration Institute focuses on specialized courses for the retraining and advanced training of IT specialists. With the participation of HTP residents, the Educational Center of the Hi-Tech Park was established to provide re-education for adults who want to start a career in the IT industry, as well as training for employees of IT companies willing to improve their knowledge and skills.

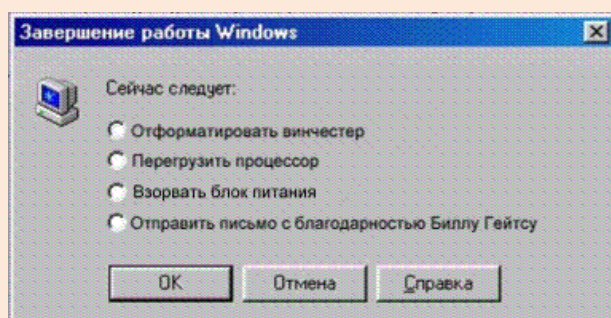
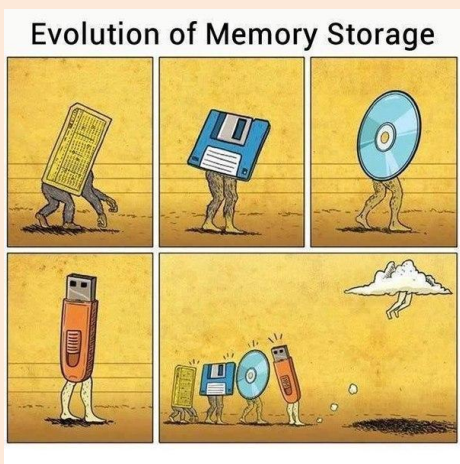
The IT industry labor market features an average salary level that is much higher than in all other sectors of the economy and is constantly rising for both experienced staff and beginners. The majority of best qualified IT staff work in the IT products and services segment. The IT industry has a reputation for providing secure and well-paid jobs that are immune to economy-wide fluctuations in both the labor market and the regional economy.





Special attention in the IT industry is paid to improving English language skills. IT companies are working hard to improve their staff's proficiency in foreign languages. IT companies organize online training or send their employees on specialized and in-house training courses.

Most companies are registered and are growing in Belarus, but have many representative offices on the key markets: USA, EU, UK, etc. EPAM Systems is a perfect example.



Студенческая газета кафедры
английского языка ГГУ им. Ф.
Скорины, № 2/2018.
Редколлегия: Петухова Г.Н.

Наш адрес: 246019, г. Гомель, ул.
Советская, 102, аудитория 3-19